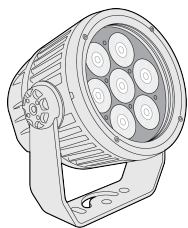


DYNA DRUM EO COLOR™

ACCLAIM
LIGHTING



Client:

Project:

Type:

Order Code:

Quantity:

Dyna Drum EO Color is a high output, outdoor rated, quad-color LED floodlight. It features an internal 100-277VAC power supply, onboard DMX+RDM driver, and each unit carries Acclaim's Aria wireless DMX technology inside. It comes with a narrow 10° beam standard, with optional quick-change spread lenses for wider applications. It is ideal for facade lighting applications and as an area floodlight.

SPECIFICATIONS

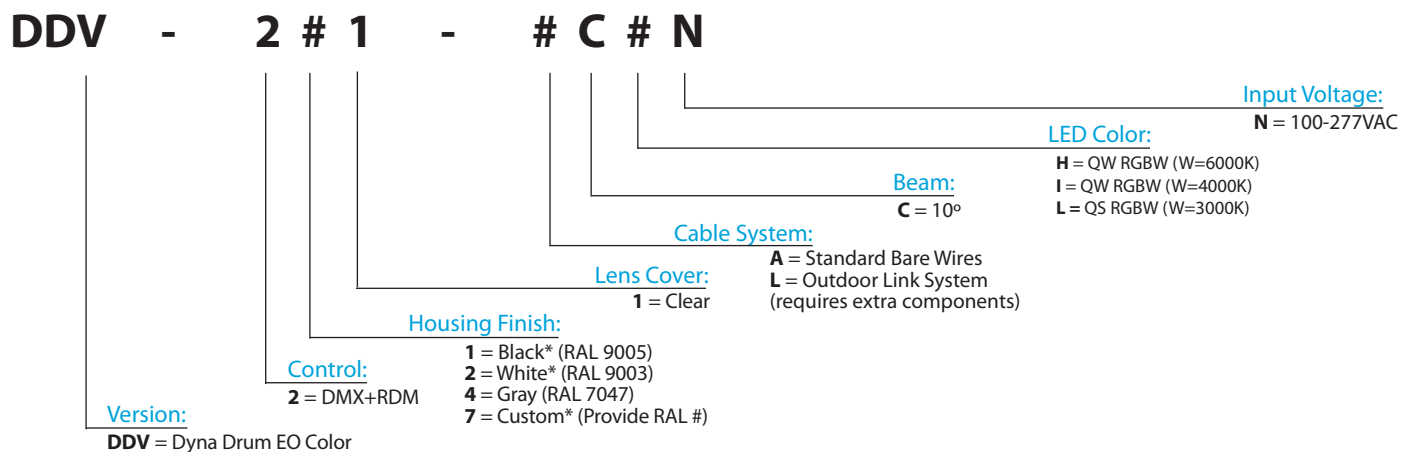
Colors	QW6: RGBW (W=6000K), QW4: RGBW (W=4000K), QS: RGBW (W=3000K)
Beam Angles	10° standard, 20°, 40°, 60°, 10° x 60° spread lens options
Photometrics	See page 4, up to 2200 lumens, 51,000 center candela
Effective Projected Area	0.72 ft ²
Control	DMX+RDM, manual color setting in menu, photocell included, Aria wireless direct connect
Max Fixtures in Series	32 via DMX, power local to each fixture
Power Consumption	72W maximum
Operating Voltage	100-277VAC, 50/60 Hz
Lumen Maintenance	L70 @ 150,000 hours (25° C)
Mounting	Surface mount bracket included, optional tenon mount and pipe clamp available
Finish	Gray standard (RAL 7047), black, white, and custom colors optional
Material	Die cast aluminum, polycarbonate lens, optional marine coating available
Ambient Operating Temperature	-40° F to 125° F (-40° C to 51° C)
IP Rating	IP66, wet location
IK Rating	IK07, protection against 2 joule impact
Fixture Connectors	Attached 5' (1.5m) IP66 hybrid cable, AC power +DMX/RDM
Warranty	5 Years, limited
Weight	11.68 lbs. (5.3 kg)
Dimensions	L: 9.6" x W: 8.81" x D: 6.49" (244mm x 224mm x 165mm)

Certifications



ORDER CODES

* indicates special order



RELATED COMPONENTS

Optional Beam Accessories

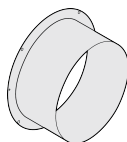


DDEOSL20
20° Spread lens for Dyna Drum EO

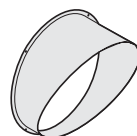
DDEOSL40
40° Spread lens for Dyna Drum EO

DDEOSL60
60° Spread lens for Dyna Drum EO

DDEOSL1060
10° x 60° Spread lens for Dyna Drum EO



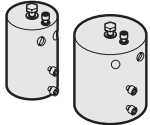
DDEOFSG Full snoot for Dyna Drum EO, Gray
DDEOF SB Full snoot for Dyna Drum EO, Black
DDEOFSW Full snoot for Dyna Drum EO, White



DDEOHSG Half snoot for Dyna Drum EO, Gray
DDEOHSB Half snoot for Dyna Drum EO, Black
DDEOHSW Half snoot for Dyna Drum EO, White

RELATED COMPONENTS

Optional Mounting Accessories



TM2

Use with 2" pipe, schedule 40 tenon mount
(2.51", 56mm inner dia.)

TM4

Use with 3.5" pipe, schedule 40 tenon mount
(4.13", 105mm inner dia.)



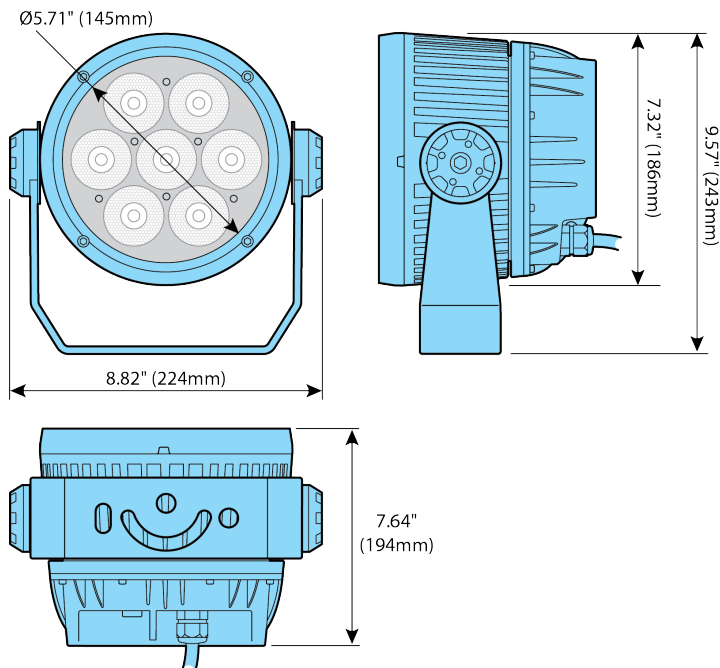
PC2

2" pipe, schedule 40 pipe clamp
mounts 1 or 2 fixtures

PC4

4" pipe, schedule 40 pipe clamp
mounts 1 or 2 fixtures

DIMENSIONS



ACCLAIM
LIGHTING

A diagram of a 10-pin XLR cable with a gray connector on the right. Ten colored wires extend from the connector, each with a label pointing to it. The labels are as follows:

- #16 Green/Yellow (AC Ground)
- #16 Brown (AC Live)
- #16 Gloss Black (AC Neutral)
- #26 Matte Black (Shared DMX Ground)
- #26 White (DMX Output +)
- #26 Red (DMX Input +)
- #26 Green (DMX Output -)
- #26 Gray (DMX Input -)



SPECIFICATION SHEET 2.0.6
Specifications subject to change without notice